

# 166 GEARY STREET

WORLD CLASS  
LOCATION,  
IN A WORLD  
CLASS CITY.

THE WHITTELL BUILDING

UNION SQUARE:

OFFICE  
CREATIVE  
PROFESSIONAL



MARC WOLFE

(415) 388-8700 ext.102

[marc@wolfecommercial.com](mailto:marc@wolfecommercial.com)



JOHN CLAY-MORRIS

(415) 539-1112

[jcmorris@tcp.com](mailto:jcmorris@tcp.com)





# PROPERTY SUMMARY

---

## AVAILABILITIES

SUITE	SQ. FT.	DESCRIPTION	AVAILABLE DATE	ASKING RATE
300	+/- 537	Office	Immediate	\$60s F.S.
402	+/- 499	Office	Immediate	\$60s F.S.
800	+/- 2,540	Office	Immediate	\$60s F.S.
900	+/- 1,603	Office	Immediate	\$60s F.S.
1007	+/- 1,042	Office	Immediate	\$60s F.S.
1100	+/- 2,540	Office	60 Days	\$60s F.S.
1502	+/- 488	Office	Immediate	\$60s F.S.

## HIGHLIGHTS

- + COMPLETE COMMON AREA RENOVATION UNDERWAY
- + 360 DEGREE VIEWS OF UNION SQUARE, COIT TOWER, AND DOWNTOWN FINANCIAL DISTRICT
- + PRIME CREATIVE OFFICE OPPORTUNITIES ADJACENT TO UNION SQUARE
- + OPEN FLOOR PLANS, IDEAL FOR CREATIVE OFFICE & VIRTUALLY ALL OFFICE USES
- + ABUNDANT NATURAL LIGHT AND SPECTACULAR VIEWS
- + GREAT PROXIMITY TO PUBLIC TRANSPORTATION LINES
- + MULTIPLE SUITES AVAILABLE WITH POTENTIAL FOR FULL FLOOR TENANCY
- + BUILDING FACADE, LOBBY, AND INTERIORS UNDERGOING REMODEL

This information has been secured from sources we believe to be reliable but we make no representations or warranties, expressed or implied, as to the accuracy of the information. Buyer or lessee must verify the information and bears all risk for any inaccuracies.

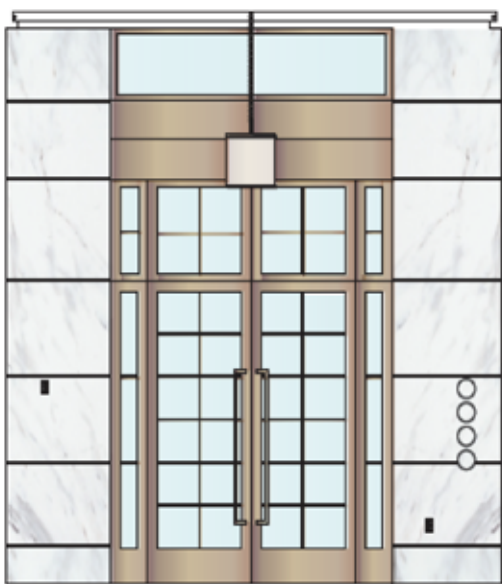


INTERIOR PHOTOS

---

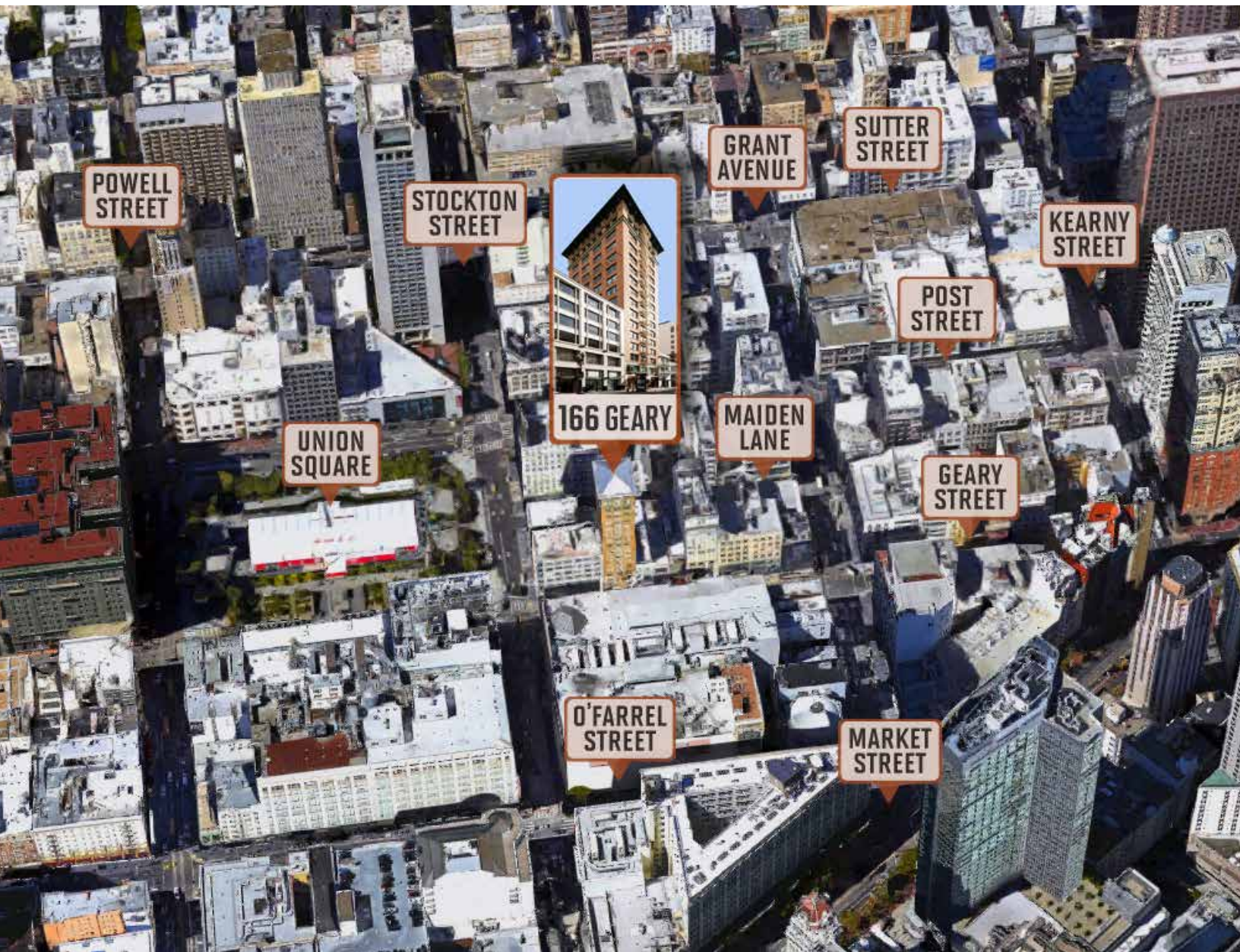


# FACADE & LOBBY RENDERINGS



# LOCAL AREA MAP

---



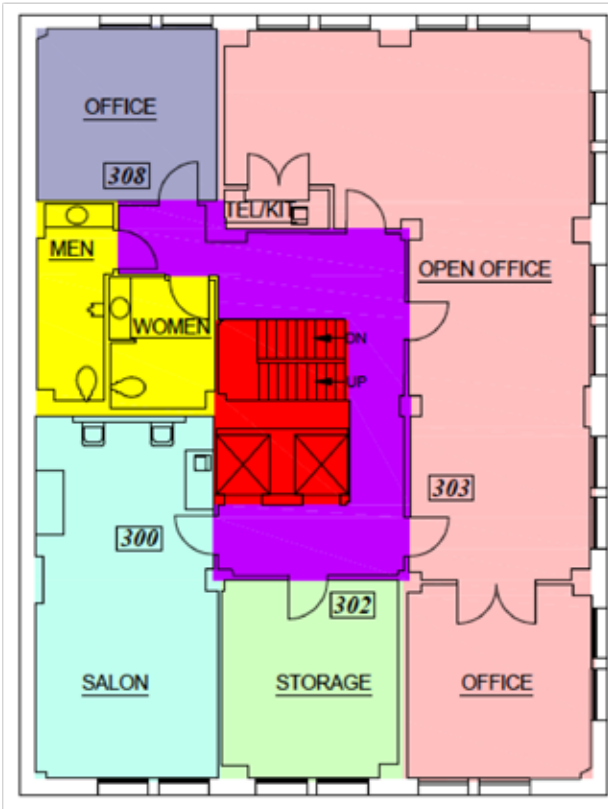
# AMENITIES MAP



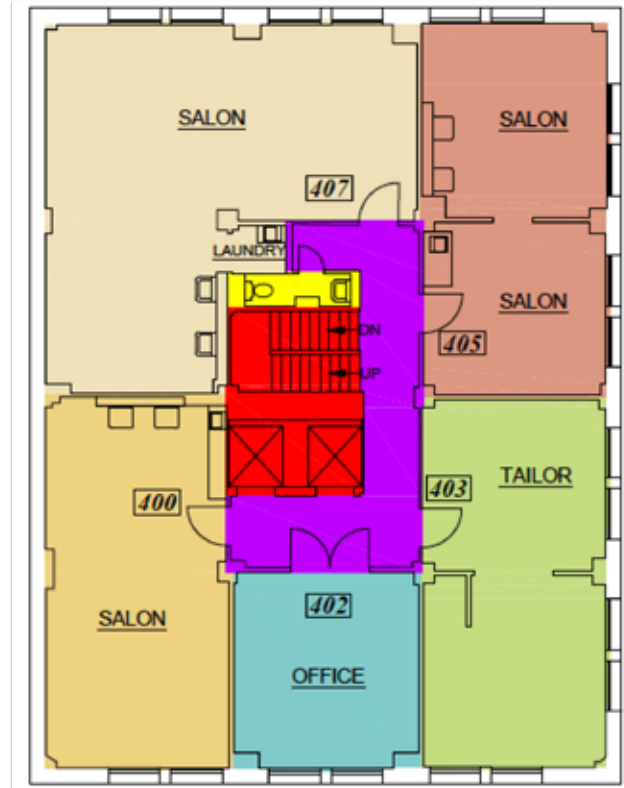


# FLOOR PLAN

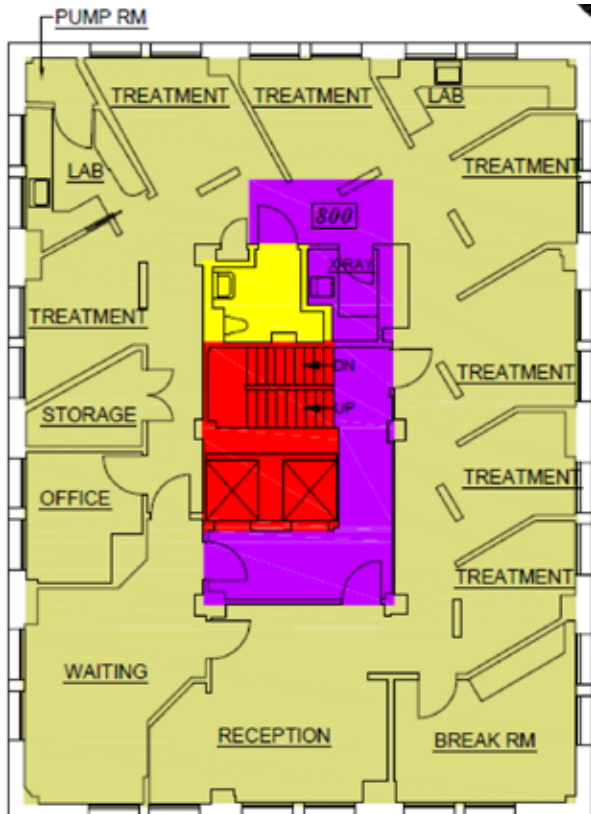
SUITE 300 - 537 SQ. FT.



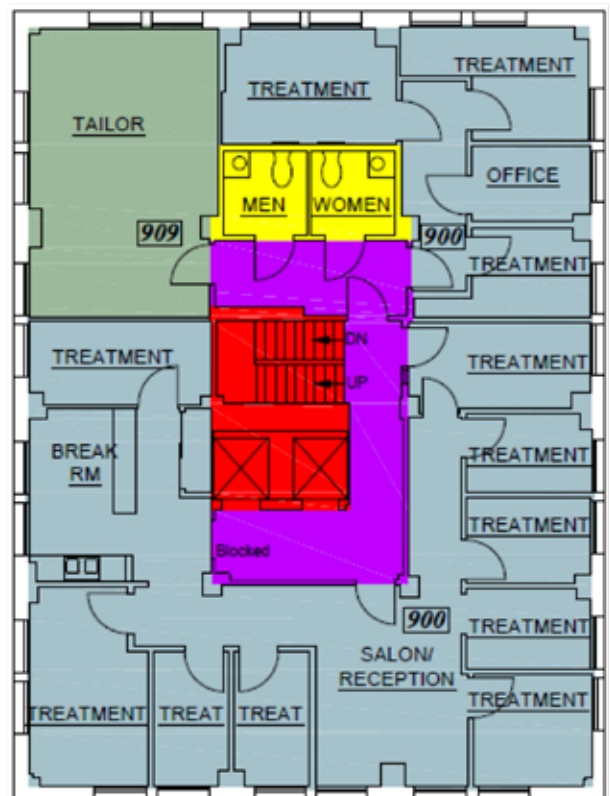
SUITE 402 - 499 SQ. FT.



FULL 8TH FLOOR - 2,540 SQ. FT.

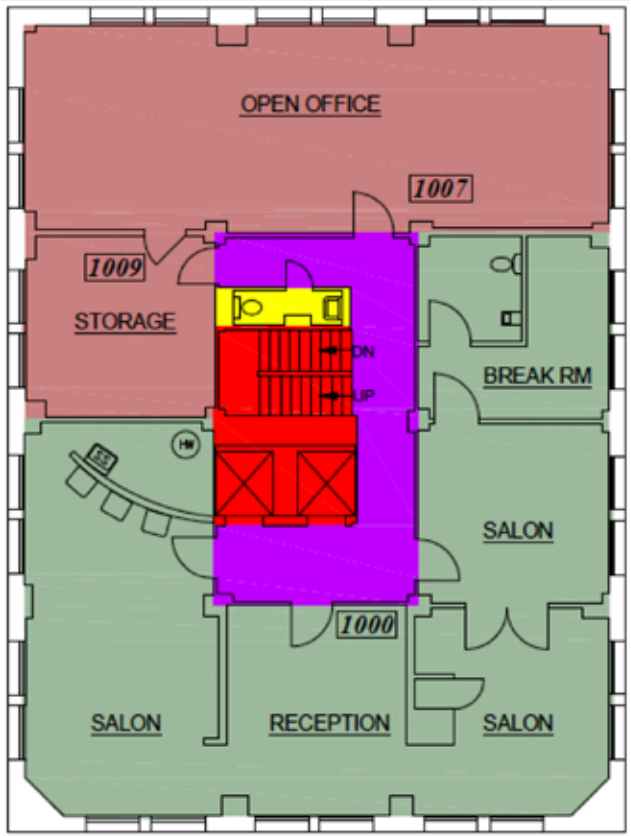


SUITE 900 - 1,603 SQ. FT.

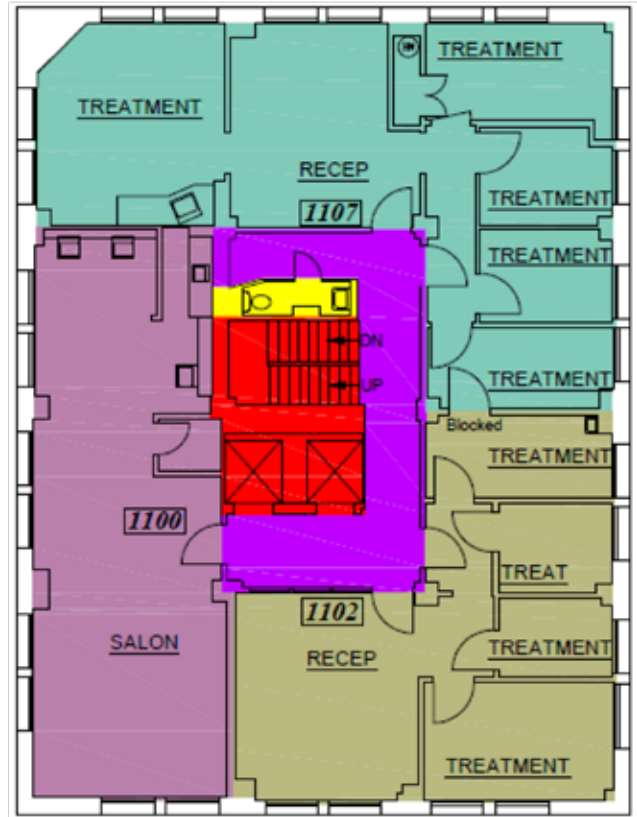


# FLOOR PLAN

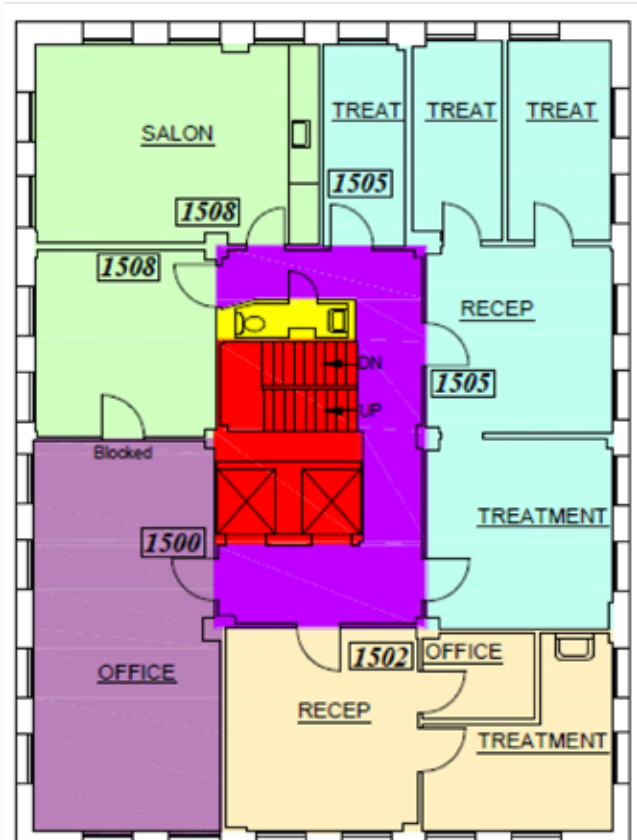
SUITE 1007 - 1,042 SQ. FT.



FULL 11TH FLOOR - 2,540 SQ. FT.

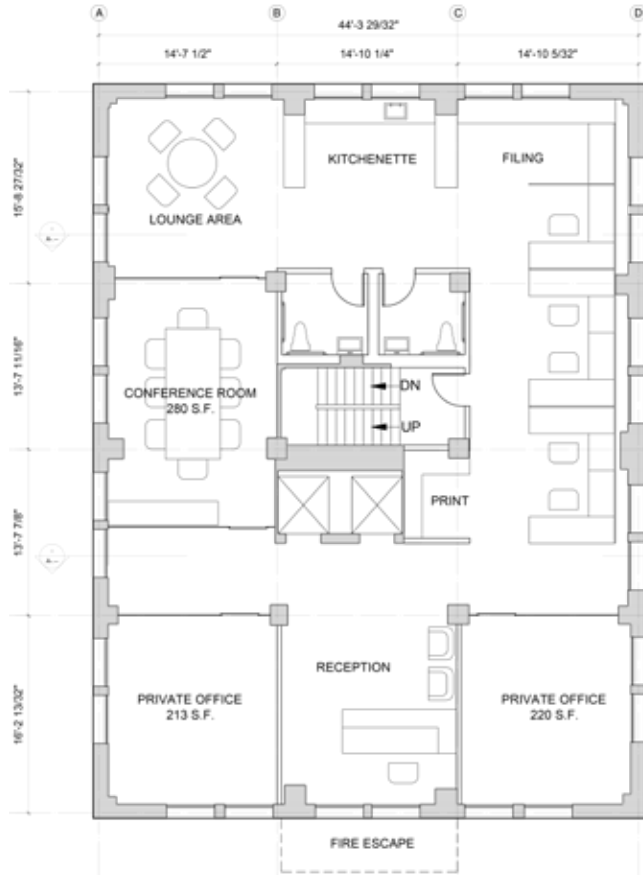


SUITE 1502 - 488 SQ. FT.

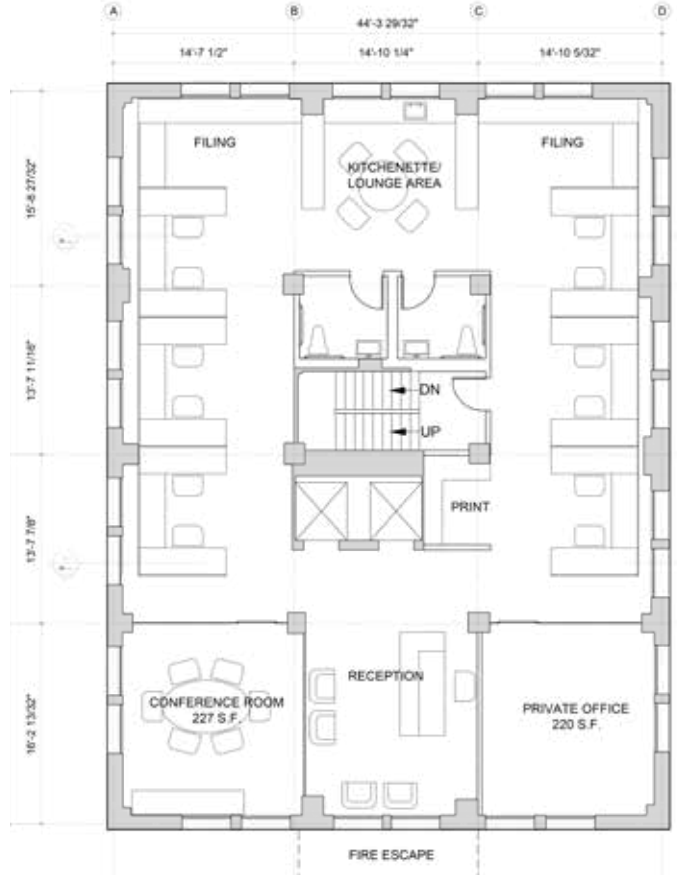


# CONCEPTUAL FLOOR PLAN - FLOOR 8 & 11

## OPTION 1



## OPTION 2



## OPTION 3



# LANDLORD REPRESENTATION



MARC WOLFE

DIRECT

(415) 388-8700 ext.102

CELL

(310) 402-8600

EMAIL

marc@wolfecommercial.com

BRE# 01200489



JOHN CLAY-MORRIS

DIRECT

(415) 539-1112

CELL

(415) 517-5400

EMAIL

jcclay@tcp.com

BRE# 01263079



IN ASSOCIATION WITH:  
CONCORD REAL  
ESTATE SERVICES

